
Three New Leaders Elected to AIA Board of Directors



Illya Azaroff, FAIA as 2025 President-elect/2026 President



Joshua Flowers, FAIA as 2025-2026 Secretary



Matthew Toddy, AIA as 2025 - 2027 At-Large Director

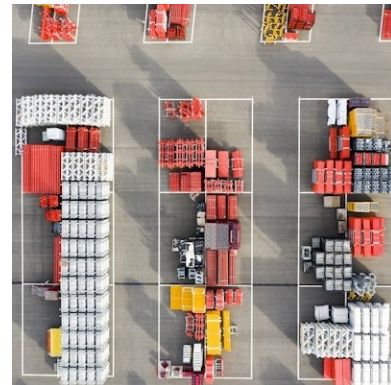
Three new leaders have been elected to The American Institute of Architects' (AIA) Board of Directors, to serve terms beginning on December 13, 2024. [Learn more >](#)

2023 Architects Journey to Specification Reveals Post-Pandemic Shifts in Firm Culture, Product Experimentation

Architects are still impacted by the lingering effects of the COVID-19 pandemic, according to AIA's 2023 Architects Journey to Specification, the annual report assessing changes to how architects learn about materials, interact with manufacturers, and make informed product selections. The report, sponsored by Deltek and ConstructConnect, suggests the ensuing recession, supply chain issues, and remote working has led to a significant decline in risk taking, early product adoption, and collaboration since 2019.

For the first time since 2016, AIA offers free access to entire study tracking the evolution of product specification and selection.

[Read more >](#)



AIA Home Design Trends Q2 Survey and Results are Available

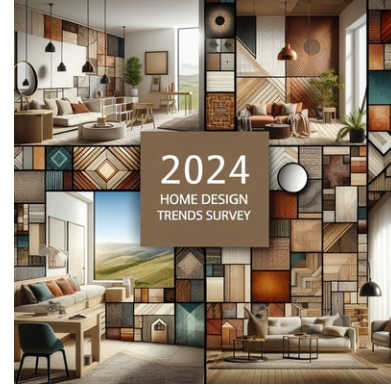
The visual format of the AIA Home Design Trends Survey results is intended to help you quickly identify emerging trends in home design by using visual cues to scroll over and pull up charts and figures with findings for each quarter.

Each quarter the AIA Home Design Trends Survey highlights a different area of home trends and includes the same business

conditions questions for tracking purposes.

- Q1 Kitchen and Bath
- Q2 Home and Property Design
- Q3 Home Features
- Q4 Neighborhood and Community Design

[Read the Home Design Trend Survey Results](#)



MEMBER NEWS

Becker Morgan Group Welcomes New Talent

Becker Morgan Group is excited to welcome twenty-two new team members across our offices and disciplines. Becker Morgan Group President, W. Ronald Morgan, AIA, comments on the firm's growth, "I am excited to welcome an exceptional group of individuals to our team and to watch them all grow within the firm."

Since last year, the architecture, civil engineering, structural engineering, surveying, interior design, graphic design, and administrative departments have grown. New staff members will continue to uphold the exceptional service clients have come to expect from Becker Morgan Group across the Delaware, Maryland, and North Carolina offices.

Please help the firm welcome the : Wethny Antoine, Noelle Baker, Angelica Bangit, Justin Chaffinch, Heidi Davari, Christopher Fernandez, Caitlyn Fitzsimmons, Joshua Fleetwood, Brandon Fletcher, Samuel Gerbino, Jr., Julian Gray, Keegan Holdorf, Hope Jackson, Abriana Jacobs, Julia Kelly, Linza Lewis, Jr., James Long, Jean-Luc May-Pohlman, Zach Reed, Connor Rock, Claire Wagner, and Bradley Whitney.



ARCHITECTURE
ENGINEERING



Becker Morgan Group Ranks Among Top Design Firms in the Mid-Atlantic

For the eleventh year in a row, Engineering News-Record ranked Becker Morgan Group among the Mid-Atlantic Region's Top Design Firms. Projects contributing to this success include Home2 Suites by Hilton in Virginia Beach, Delaware Solid Waste Authority's Administrative Office Building, and the Stephen Decatur Middle School Addition.



As a news leader for the architecture, engineering, and construction industry, Engineering News Record's Annual Top Design Firms list ranks the largest U.S. firms based on design-specific revenue in each region. The Mid-Atlantic encompasses Delaware, Maryland, Pennsylvania, Virginia, West Virginia, and DC.

The firm's leadership attributes this ongoing recognition from ENR Mid-Atlantic to the exceptional clients, dedicated staff, and supportive communities that enable Becker Morgan Group to play a pivotal role in the region's most impactful projects.

About Becker Morgan Group

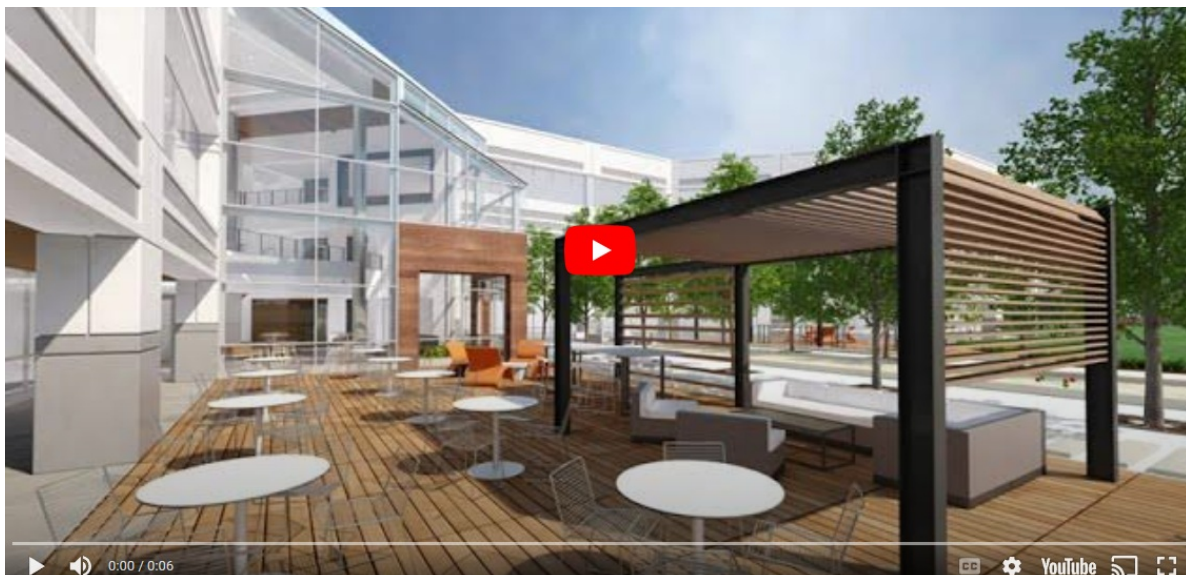
Established in 1983, Becker Morgan Group is a leader in architecture, engineering, surveying, land planning, and interior design in the Mid-Atlantic and Southeast regions of the United States. Learn more at www.beckermorgan.com.

Let's Work On It

At [CadRender](#), we are committed to fostering a team-oriented environment and delivering top-notch renderings that exceed our clients' expectations. Our work ethos revolves around letting our creations speak for themselves, hence, we do not seek recognition. When you choose to work with us, you can expect personalized service and a cooperative relationship that will breathe life into your project.



You can be creative in your design and we can show your clients what that design looks like before it is built. aburkert@cadrender.com can partner with you and create FAST, QUALITY renderings and animations. Your Clients will appreciate QUALITY renderings.



For over 25 years [CadRender](#) has, happily, worked in the background for many, many Architects, Developers, advertisers and creators. CadRender has helped them to visualize projects before they are built. These visualizations of their upcoming projects helps them obtain approvals and generate excitement. We have a great job.

Get in touch

Andy Burkert, Associate AIA
aburkert@cadrender.com

PROGRAMS & EVENTS

Next to Lead 2024

Applications are open for [Next to Lead 2024](#) - AIA's leadership development training program for racially and ethnically diverse women in architecture who aspire to be AIA leaders.

As many as 18 women will be accepted into the ten-month Next to Lead program designed to enhance association leadership acumen, give voice to relevant topics affecting women in the workplace and the profession, and refine leadership skills.

Participants will receive:

- Insights on volunteer leadership opportunities within AIA
- Specialized training from expert speakers and instructors
- Attendance and special recognition at the Women's Leadership Summit and AIA Leadership Summit
- Exclusive networking and mentorship opportunities

Your leadership journey starts here. Gain the essential skills and experience, then take them to your dream role at AIA or beyond.

Applications are due August 13—apply today!

[Learn more and apply here >](#)



John G. Thorpe Emerging Professionals & Students Fellowship now open

The Frank Lloyd Wright Building Conservancy is now accepting applications for the John G. Thorpe Emerging Professionals & Students Fellowship.

The Thorpe Fellowship provides funding for emerging professionals & graduate students in architecture or historic preservation to attend [the Conservancy's annual conference, Frank Lloyd Wright & the American City Today](#), taking place in Detroit, Michigan, September 25-29, 2024. Conference tours and talks enable Fellows to deepen their understanding of Wright's architecture and immerse themselves in the community of scholars, practitioners, Wright building stewards, and others who are dedicated to preserving this important architectural legacy.

The deadline to apply for this competitive award is Monday, July 22, 2024. Notifications will be made by Tuesday, August 6. Fellows receive free core registration for the conference, which includes the opening reception, three days of conference talks and tours, and the gala dinner with Wright Spirit Awards.

Additional information about eligibility, the online application process, and the award can be found at: savewright.org/thorpe.



2024 Fire Facilities Design Awards Program

Saturday, September 21st, 2024, the Fire Industry Education Resource Organization (F.I.E.R.O.) will convene its 18th Annual Fire Station Design Awards Program Jury. Six Jurors, drawn from across the US, all with professional experience in both design practice and the fire service will review the entries. Their collective experience always ensures rigorous project reviews, yielding respected jury



decisions.

In conducting its annual Fire Station Design Awards Program, F.I.E.R.O. seeks to recognize excellence in the design and construction of fire stations and related emergency facilities. F.I.E.R.O. also seeks by its design awards program to encourage continued quality investments in these special purpose, “civic-pride” buildings.

The awards program is open to design firms or emergency services agencies that have brought a facility on-line during the past seven (7) years or have a project “On-the-Boards” that has not yet been approved for construction by the funding authority. Design awards may also be given for outstanding examples of major fire station addition and/or renovation projects as well as for deactivated iconic fire stations that have been adapted to use for another purpose. Design awards can also be earned for noteworthy innovations, outstanding attention to health and safety issues, and for “legacy” fire stations.

[Learn more >](#)

[Download Flyer](#)

CAREER

Welcome New Members!

- Mark S. Bauernhuber, AIA
- Brooke A. Brown, Associate AIA
- Cody C. Dodd, Associate AIA
- Dumitru Jubea, Associate AIA
- Joseph M. Pavoni, AIA
- Patrick L. Pinnell, FAIA
- Christopher Tobin, Associate AIA



Join the AIA Member Community

AIA is the largest, most influential network of architecture professionals—a community of 98,000+ members who share your passion for design and your desire to change the world.

When you join AIA, you're joining our community—and so much more. Membership connects you around key practice areas so you can share knowledge, partner on solutions, and learn from experts and creative thinkers.

It connects you to your local architecture community through your chapter, which hosts virtual events, conferences, awards programs, and volunteer opportunities.

And it comes with unparalleled support AIA offers for your career, your practice, and the architecture profession, plus free [AIAU courses](#) and free [practicepractice guides and reports](#) to help you design for equity and climate action. It's this kind of support and community that matters. Join AIA, and let's design a better world, together.

[Join AIA >](#)



JOIN AIA

AIA Delaware Job Board

AIA Career Center

How Firms Can Reduce Tax Burdens through Credits And Incentives

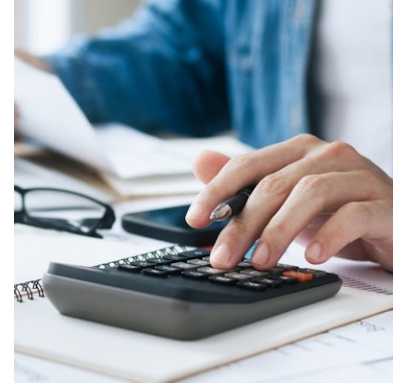
The R&D Credit and 179D (the Energy-Efficient Commercial Building Deduction) can help architects potentially reduce their tax bills. AIA partner Brayn Consulting explains what you need to know to claim lucrative savings.

2024 promises to both pose a challenge and present substantial upsides for architecture firms from a tax perspective. Architecture firms can capitalize on lucrative tax incentives, namely the Credit for Increasing Research Activities credit ("R&D Credit") under Section 41 and the Energy-Efficient Commercial Building Deduction ("179D Deduction") under Section 179D.

The frameworks governing both incentives have recently undergone significant changes, causing the relative value of the R&D Credit to decrease and that of the 179D Deduction to substantially increase.

With careful tax planning and a keen understanding of these incentives, architecture firms may be able to significantly reduce their tax bill despite continuing challenges on the R&D Credit front.

[Read more >](#)



Best Practice Guides for Architect Licensure Support now available

For many individuals working to become architects, firm culture is inseparable from licensure progress. Throughout the path to licensure, candidates rely on their firms to help them earn and document experience, prepare for and take the licensing exam, and encourage their professional growth. But NCARB and NOMA's [Baseline on Belonging](#) study highlighted disparities in firm support for candidates pursuing licensure, with women and people of color often reporting lower levels of firm support than their white, male peers.

To help build a foundation for firm leadership and candidates, NCARB has developed two new resources based on our [Baseline on Belonging](#) research. These resources aim to promote equitable workplaces by ensuring that candidates know what licensure support they can advocate for, and that firms better understand what level of licensure support they should be offering - and how to share that information with their employees.

[View the Guides](#)



These guides were developed based on findings from NCARB and NOMA's [Baseline on Belonging](#) study and [our joint action plan](#).

MEMBER GROUPS

Small Firm Exchange (SFx)

The mission of the AIA Small Firm Exchange (SFx) is to advance the mutual interests of architects practicing in small firms. This year, SFx is focusing on practice and providing relevant information to members in areas related to improving their practice.

Starting a Firm

Brief Intro to the AIA Trust: "The best kept secret at the AIA" and how members can access the many resources available for starting/running architecture firms

Inspiration and Resources

- [Watch SFx Spotlight: Dana Ellis, AIA Shares her Journey to Opening her Firm](#)
- [Download the SFx Starting a Firm one-page resource](#)
- [Check out resources from AIA Trust](#)
- [Contact Will Hurd, AIA, Delaware's SFx Representative](#)

Small Firm Exchange

AIA Member group

Young Architects Forum (YAF)

News and Call for Volunteers

The AIA [Young Architects Forum](#) (YAF) is a member group organized to address issues of importance to recently licensed architects (those licensed less than ten years).

The [2025 Call for Volunteers](#) to the YAF Advisory Committee is now open until July 8th. There are currently 4 YAF positions available.

- 2025 Vice-Chair
- 2025-2026 Knowledge Director
- 2025-2026 Communications Director
- 2025-2026 Advocacy Director

[Learn more >](#)

[Contact Jack Whalen, AIA, Delaware's YAF Representative](#)

National Associates Committee (NAC)

News and Call for Volunteers

LEARN about the AIA [National Associates Committee](#) (NAC), a member group dedicated to representing and advocating for AIA's Associate members in AIA's national, state and local chapters.

The [2025 Call for Volunteers](#) to the NAC Advisory Committee is now open until July 8th. There are currently 5 NAC positions available.

- 2025 Vice Chair/ 2026 Chair
- 2025-2026 Knowledge Director
- 2025 - 2026 Strategic Partnerships Director
- 2025 - 2026 Advocacy Director
- 2025 Associate Representative to the Strategic Council / 2026 Associate Representative to the Board

[Learn more >](#)

[Contact Christine Olshan, Assoc. AIA, Delaware's NAC Rep.](#)



The National Associates Committee (NAC) dedicated to representing and advocating for AIA's associate members in AIA's national, state and local chapters.



Lauren Harris, Chair
This month saw 22 of our NAC group attend AIA24, where we participated in events at the National Conference. Some participated as conference speakers, some as Associate Chair, and others by helping highlight the SP Scholarship Award winners.

MEMBERSHIP CATEGORIES
The NAC participated in discussions regarding the proposed membership categories, and we continue to discuss changes to membership categories that will support associates in their careers. Recommendations for new categories are in the works for next board term.

ARCHNAC
The NAC has made an effort to support the ARCHNAC, both with funding to policy makers on architectural education and through our own efforts to support the ARCHNAC. This year, we celebrated the launch of the ARCHNAC's new website. See us below!



Daniel Tate, Vice Chair
2025 call for volunteers is now open until July 8th. There are currently 5 NAC positions available for applicants.
• 2025 Vice Chair 2026 Chair
• 2025-2026 Knowledge Director

• 2025 - 2026 Strategic Partnerships Director
• 2025 - 2026 Advocacy Director
• 2025 Associate Representative to the Strategic Council 2026 Associate Representative to the Board

You can find detailed information on the AIA website. See us below!
[https://www.aia.org/about-us/committees-and-organizations](#)



Tania Chavez, Assoc. Director
The Public Awareness Committee is actively developing content for the "Future Focuses" campaign, addressing the needs of women and minority groups in our profession.

FUTURE FOCUSED
These first and second quarter featured our Vice-Chair, [Christine Olshan](#), [Christine Olshan](#), [Christine Olshan](#), [Christine Olshan](#), [Christine Olshan](#), and [Christine Olshan](#).

THE VALUE OF AN ARCHNAC
Launched in 2022, the ARCHNAC is a national organization that provides a platform for architectural education and professional development. This year, we celebrated the launch of the ARCHNAC's new website. See us below!



Alyssa Sulayran, Rep to Strategic Council
The Strategic Council work groups are continuing their work with their respective members. Reports to the Board will be due in August followed by presentations.

COUNCIL CONNECTION
The Strategic Council began implementing the "Council Connection" in April and will continue to do so for the remainder of the year. This is an excellent and informal meeting to discuss interesting topics and get to know one another better.

NAC/AF AND THE STRATEGIC COUNCIL
Earlier this year, the Strategic Council invited NAC and YAF representatives to be involved with the Council's work. This year, we will have representatives who also have the opportunity to join Council Assemblies in June 2025.



Ingrid Spencer, CACE Liaison, ED, AIA Austin
The CACE Liaison serves as a bridge between the NAC and the CACE, providing support and resources to CACE members and providing with CACE.

Big Site
The Big Site is an official group composed of the 20 AIA Chapters with 1000+ members. AIA Austin has been invited to be a member of the Big Site. This is an excellent and informal meeting to discuss interesting topics and get to know one another better.

Future Forward
This year, we will have a new group of representatives to be involved with the Council's work. This year, we will have representatives who also have the opportunity to join Council Assemblies in June 2025.

DISASTER ASSISTANCE COMMITTEE

Resilience Design Toolkit

The [Resilience Design Toolkit](#) is a comprehensive step-by-step process guide for seamlessly incorporating resilient design in your architecture and design projects.

Resilience design strategies play a crucial role in establishing secure, healthy, and sustainable communities. The Resilience Design Toolkit has been developed to assist architects in integrating resilience studies into their projects. This comprehensive guide provides a step-by-step process for seamlessly incorporating resilience design thinking into the overall design process.

The toolkit not only imparts architects with vital background information regarding the significance of resilience design but also equips them with the knowledge to adapt design methods to cater to the unique requirements of each project. Initially stemming from a research study conducted at HKS, the toolkit has undergone further refinement through collaboration with the AIA Resilience & Adaptation Advisory Group, resulting in a highly flexible and practical resource for integrating resilience thinking into project design.

Structured around a well-defined five-step process, the toolkit aligns the document's layout with the recommended approach. One key highlight of the toolkit is its emphasis on the financial evaluation of resilience design strategies. By quantifying the costs and benefits of implementing these strategies, architects are empowered to make a compelling case for their inclusion in projects, ensuring a harmonious alignment of client expectations and design intentions. Moreover, this approach fosters the creation of high-performance buildings that can withstand future challenges effectively.

With the [Resilience Design Toolkit](#), architects are equipped with a valuable resource to navigate the intricacies of resilience design and foster the development of resilient communities.



Learn about [AIA's Disaster Assistance Program](#)

[Contact Jason Maguire, AIA, Chair, Delaware's DA Committee](#)

● ● ●

Our Partners





New AZEK Bevel Siding

Design for Longer-Lasting Beauty

[AZEK Bevel Siding](#) is the most authentic-looking replacement for cedar siding with the added low-maintenance performance of rot-proof PVC. Tapping into the expertise we've built with our exclusive PaintPro Technology, AZEK Bevel is the lowest maintenance paintable siding product on the market today. It's engineered to be painted and deliver long-lasting paint performance and adhesion. The three- to seven-year paint and stain cycle that natural cedar requires is a thing of the past. AZEK Bevel Siding perfectly mimics a cedar clapboard. AZEK Bevel needs no sanding or priming. It comes to your job site ready for paint. It's made from a proprietary blend of PVC and other materials that make it resistant to damage from water and moisture absorption.

Why do other siding material fail? Water absorption leads to cracking, splitting and hidden damage. Constant exposure to rain, coastal winds and water pooling at the ground can lead to frequent re-painting or mold growth for wood, fiber cement and other porous siding materials. AZEK siding is made from state-of-the-art proprietary engineered polymer that does not absorb water like porous materials and is completely rot-resistant inside and out.

We offer premium [siding](#) for any architectural style with all the same attributes:

- [Board and Batten](#)
- [Shingle Siding](#)
- [TimberTech Cladding](#)
- And now [Bevel Siding](#)





To learn more about AZEK siding or if you would like a free sample, please contact me!

Sharon Moore-Corraliza,
Sr. Area Sales Manager for TimberTech and AZEK Exteriors branded products
DelmarVa Peninsula
(302) 233-5358 | Sharon.Moore@azekco.com

Landmark Announces New BD and Engineering Staff

The Board of Directors of Landmark Science & Engineering, a leading consulting firm in Delaware and Maryland specializing in site/civil and water resources engineering, environmental sciences and land surveying is pleased to announce two new hires for the firm's headquarters in Newark, Delaware. **Kristin Freebery** has joined the firm as Business Development and Marketing Manager, replacing Janet Pippert who is retiring after 19 years with the firm, and **Matthew Singleton** has joined the firm as a Civil Designer.

Kristin L. Freebery, MBA, MHRM joined Landmark in April 2024, is responsible for helping to build business and community relationships and to increase the firm's public- and private-sector business. Owners, developers and project/marketing team leaders who are interested in partnering with Landmark should contact Kristin for information about how Landmark's staff, experience and services can benefit their project and/or multidisciplinary design team.

Kristin has a strong background in civil engineering and commercial real estate through many years of work experience providing marketing, business and human resources management. After working in the public sector for eight years for New Castle County Government's Law Department, Kristin also spent 17 years working in the private sector, including with local consulting engineering firms Karins and Associates and Ramesh C. Batta Associates.

Matthew E. Singleton joined Landmark full-time in May 2024 as a project designer. Matt originally started working part time in the survey department in the summer of 2023 and does a mixture of design and survey work. Matt graduated from the Civil Engineering Technology Associate Degree Program at Delaware Technical Community College and is an American Association of Highway and Transportation Officials (AASHTO) scholarship recipient. Matt also became a Certified Construction Reviewer (CCR) in March 2024.



Landmark Science & Engineering is an award-winning consulting firm, started 37 years ago in 1987 as Landmark Engineering, Inc. and Landmark Consulting Engineers, Inc. in Maryland. The firm is one of the regions' largest and most diverse, integrated civil engineering and environmental science consulting firms, providing professional services across the disciplines of site/civil, water resources and environmental engineering and sciences, and land surveying. The environmental sciences include ecological (wetlands, forest, habitat) and site remediation/brownfields. The firm of 27 serves clients in the DE, MD, and PA region from its headquarters in Newark, Delaware and branch office in Aberdeen, Maryland. www.landmark-se.com

Our Allied Members



- Arch Resources, LLC
- Baker, Ingram & Associates
- Blake & Vaughan Engineering, Inc.
- County Group Companies
- DCI Engineers
- DEDC
- Delaware Brick Company
- DiSabatino Construction Company
- Electronic Home Solutions
- G. Fedale Roofing & Siding
- Karins and Associates
- Marvin
- Nason Construction, Inc.

- **Pangro Development, Inc.** **New member!**
- Parker Block Co. Inc.
- Penn Lighting Associates
- RCI Printing and Graphics
- SC&A Construction, Inc.
- **The Sanders Company Loewen Windows of Annapolis** **New Member!**
- Tighe & Cottrell, P.A.
- Union Wholesale Company
- Verdantas
- Wohlsen Construction Company

ALLIED MEMBER NEWS

G. Fedale Roofing and Siding

G. Fedale Roofing and Siding, a leading provider of exterior remodeling services, uses the HOVER app to streamline operations and improve workflow. The app allows them to:

- Easily upload blueprints and have the app measure plans, saving hours of tedious tracing and measurement
- Generate accurate material lists with ease, reducing errors and ensuring the right materials are ordered for each job
- Showcase designs and materials to clients in an engaging and inspiring way, building trust and ensuring client alignment



The HOVER app has been a game-changer for their business, allowing them to focus on delivering exceptional service to customers while reducing waste and improving efficiency.

For further information or a demonstration, please contact Glenn Fedale Sr. at 302-287-0239 or glenn.fedalesr@gfedale.com.

Getting the Jobs We Want

For G. Fedale Roofing and Siding, HOVER helps jobs run smoother in one easy-to-use app, from collaborating on designs to ordering materials.

Upload a blueprint: Reclaim hours wasted measuring blueprints. Hover measures for you.

Get your takeoff: Order-ready material lists in a few simple clicks.

Show your vision: Align early with customers by showing designs and interactive renderings showcasing your materials.

G. Fedale

A Modern and Elegant Culinary Haven

This kitchen exudes both functionality and style, characterized by its clean lines and a neutral color palette with a focus on natural materials. This project, like all of our work at PanGro, makes the home feel and stay up to date, functional, and beautiful while preserving its original intrinsic features, consistently tying in the old with the new.



The space features state-of-the-art stainless-steel appliances seamlessly integrated into sleek cabinetry, offering ample storage without compromising aesthetics.



A large peninsula with a warm wooden countertop provides a welcoming area for casual dining or complemented by stylish bar stools. Made from Ipe Brazilian wood and specialty bolts to make sure the seams don't come apart. 4 coats of poly and satin finish to match the countertop.

Unique pendant lights above the island add a touch of sophistication and provide task lighting. The walls are adorned with tasteful art pieces and decorative elements that reflect the homeowner's personality, such as an eye-catching moose head sculpture.

The backsplash is a standout feature, crafted from elegant subway tiles that add texture and visual interest to the space. Large windows allow for an abundance of natural light to flood the space, enhancing the open and airy feel while offering views to the outdoors.

This kitchen is not only a culinary workspace but also serves as a central gathering spot in the home, marrying form and function in perfect harmony. [See before and after photos.](#)

[PanGro Development](#) is a contracting company specializing in the renovation of older homes with European craftsmanship. For more information, contact Jamye Cole at (302) 351-3575

Tighe & Cottrell, P.A. Attorneys Recognized as Top Lawyers in [Delaware Today](#) for Construction Law



Melissa L. Rhoads practices in the areas of insurance defense, business law, general litigation, commercial transactions, employment law, and estate planning. Ms. Rhoads is a member of the Bar in Delaware and Maryland.



Patrick M. McGrory advises clients in a variety of areas including professional liability, contract disputes and general litigation. Patrick's areas of concentration include architect and engineer liability defense, accountant and attorney malpractice defense, construction law, commercial disputes and corporate law.



[Tighe & Cottrell, P.A.](#) is a Mid-Atlantic regional law firm emphasizing all phases of litigation and various business practices. We furnish a broad spectrum of legal services to a variety of business entities and individuals, including pre-litigation consultations, commercial and residential real estate transactions, loan and credit restructuring, general commercial and business advice, debt collection, employment and labor law consulting and a wide array of other services.

The Firm's main office is centrally located in Wilmington, Delaware, with branch offices in: Philadelphia, Pennsylvania; Baltimore, Maryland; and Woodstown, New Jersey.

Building the Future

Wohlsen Construction Company is thrilled to have been selected as the contractor for the Unified Operations Center (UOC) Facility Project in Wilmington, Delaware. This project, with an estimated investment of over \$53 million, is a significant milestone for Amtrak.

The UOC will serve as an integrated 24/7 operations center, where Amtrak will monitor and manage national operations, dispatch the mid-Atlantic Division, and house the national operations control center. Our team is partnering with Amtrak to construct state-of-the-art workspaces, conference rooms, and a Tier-3 data center at the Renaissance Centre.

At Wohlsen, we're dedicated to enhancing reliability, efficiency, safety, and customer service. We're proud to be part of this transformative project and look forward to delivering exceptional results.

Building the Future

Wohlsen is thrilled to be selected to build Amtrak's new Unified Operations Center in Wilmington, Delaware.

WOHLSEN CONSTRUCTION

Wohlsen Construction Company, founded in 1890, provides construction management, general contracting, and design-build services to clients throughout the Mid-Atlantic and Northeast Regions. As a leading merit-shop firm, Wohlsen provides construction services in the senior living, education, healthcare,

and commercial markets, and maintains offices in Wilmington, DE; Lancaster, Harrisburg, and Berwyn, PA; Parsippany, NJ; Baltimore, MD; Hamden, CT; and Sterling, VA.

RESOURCES

- [AIA Delaware](#)
 - [Find an Architect](#)
 - [Job Board](#)
 - [Become an Partner or Allied Member](#)
- [Become an AIA Member](#)
 - [AIA Contract Documents](#)
 - [AIA Career Center](#)
 - [AIAU](#)

AIA Delaware | www.aidelaware.org

AIA Delaware | 110 E Main Street #479 | Newark, DE 19715 US

[Unsubscribe](#) | [Update Profile](#) | [Constant Contact Data Notice](#)



Try email marketing for free today!